

1. SEE 7/A3.0 FOR EXTERIOR WALL ASSEMBLY TYPES.
2. SEE EXTERIOR ELEVATIONS FOR WINDOW TYPES.
3. SEE SITE PLAN FOR SIDEWALKS, RAMPS, ETC.
4. GC TO PROVIDE ADA SIGNAGE PACKAGE AND  
 INSTALL SIGNS AT LOCATIONS AND POSITIONS  
 INDICATED IN PACKAGE OR AS REQUIRED BY LOCAL  
 CODES. SIGNAGE PACKAGE SUPPLIED BY:  
 FORREST PERMA-SIGN 1-800-214-8765  
 9292 1ST ST., BOX 588  
 www.forrestpermasigns.com NEW ROCHELLE, NY  
 10802

7 DOOR TAG - SEE DOOR SCHEDULE ON A6.0

x KEY NOTE

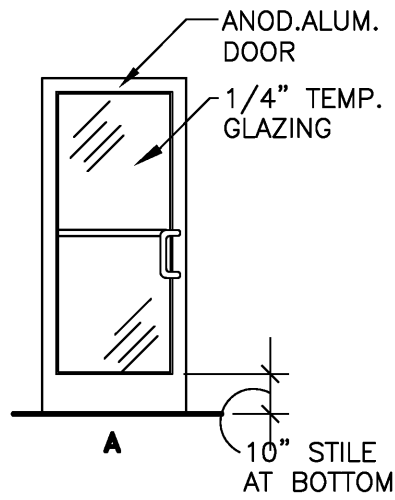
C	NEW ALUMINUM CANOPY SYSTEM ABOVE - SEE 3/A3.2 FOR NOTES - SEE ROOF PLAN FOR DIMENSIONS
GR	NEW GUARDRAIL - SEE 5/A3.2 - SEE SITE PLAN FOR EXACT LOCATIONS AND LENGTH
RL	ROOF LADDER (EXISTING)
S	NEW SIGNAGE - BY OTHERS - SEE ELEVATIONS
SF	NEW STOREFRONT SYSTEM - SEE 7/A3.0 FOR NOTES - SEE ELEVATIONS
T	NEW TRELLIS SYSTEM ABOVE - SEE 7/A3.0 FOR NOTES - SEE ROOF PLAN FOR DIMENSIONS

1. ALL EXIT DOORS SHALL BE KEYLESS IN THE DIRECTION OF EGRESS.
2. THE OPENING FORCE OF ALL EXT. PUSH/PULL DOORS SHALL NOT EXCEED 8 1/2 LBS.
3. THE OPENING FORCE OF ALL INTERIOR PUSH/PULL DOORS SHALL NOT EXCEED 5 LBS.
4. PROVIDE PANIC HARDWARE FOR ALL EXTERIOR DOORS AS NOTED ON THE DOOR SCHEDULE.
5. ALL DOOR HARDWARE SHALL NOT REQUIRE TIGHT GRASPING, TIGHT PINCHING OR TWISTING OF THE WRIST TO OPERATE.

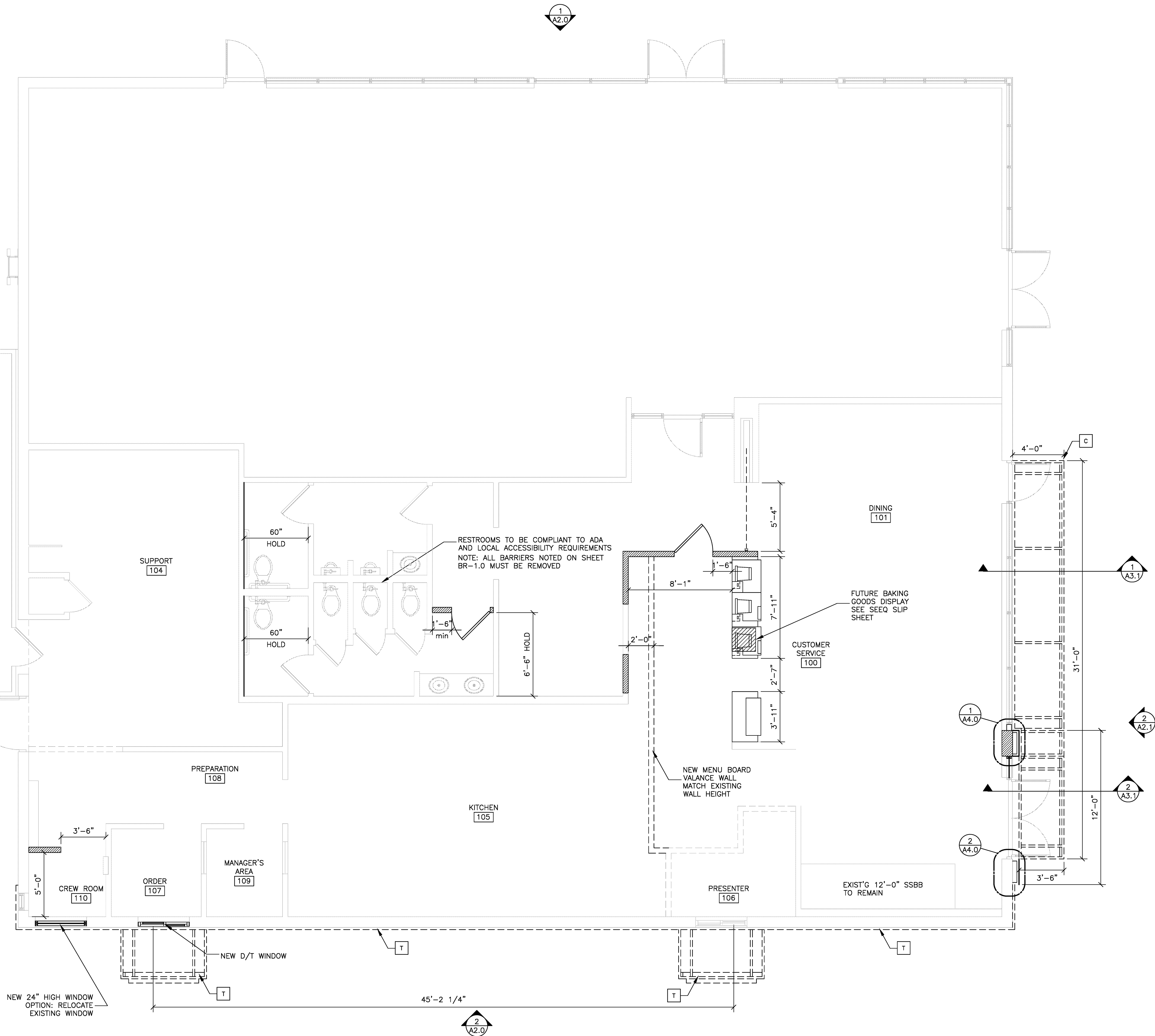
1. SEE ELEVATIONS AND WALL SECTIONS

MARK	DOOR			FRAME	
	MATERIAL	SIZE	TYPE	MATL	SIZE
1	ALUM.	3'-0" x 7'-0" x 1 3/4"	A	ALUM.	(NOTE 1)

1. CLOSER: LCN 4021 x 18
2. HINGES: OFFSET PIVOT ANSI -A-156.4 GRADE 1; PROVIDE EXPOSED PARTS OF CAST ALUMINUM ALLOY, AS SUPPLIED BY DOOR MANUFACTURER.
3. PUSH/PULL HANDLE: KAWNEER 300-9R HAGER PUSH/PULL SET 164D//V.B.
4. PANIC HARDWARE: ADAMS RITE MFC CO. 8840 SERIES WITH OUTSIDE CYLINDER ONLY (1 FINISH: 60% POLYURETHANE FRONT 20% POLYURETHANE BACK)
5. THRESHOLD: NATIONAL GUARD PRODUCTS, INC. SADDLE TYPE THRESHOLD 325, 36" WIDE x 1/2" RISE (ADA ACCESSIBLE)
6. WEATHER STRIPPING: PROVIDE COMPRESSION WEATHER STRIPPING AGAINST FIXED STOPS; AT OTHER EDGES PROVIDE SLIDING WEATHER STRIPPING RETAINED IN ADJUSTABLE STRIP MORTISED INTO DOOR EDGE. PROVIDE 100% VINYL GASKET.
7. WEATHER STRIPPING: PROVIDE BOTTOM WEATHER STRIPPING FOR WIND/THERMAL GASKET.
8. SIGN: MOUNT ONTO DOOR TO READ "THIS DOOR MUST REMAIN UNLOCKED WHENEVER THE BUILDING IS OCCUPIED/DURING BUSINESS HOURS."



**FLOOR PLAN**  
1/4" = 1'-0"



ELITE CONSTRUCTION GROUP  
LAKE JACKSON, TX  
PHONE: 979-285-0712  
NOTE: THESE PRINTS HAVE BEEN  
REDUCED BY 50 PERCENT. SCALE  
WILL BE 50 PERCENT OF WHAT IS  
NOTED ON PLANS

SHEET NO.	TITLE	DRAWN BY	PREPARED FOR:	REV	DATE	BY
	MRP 2.0 STO REMODEL BUILDING CORP 16 EXTERIOR DESCRIPTION	S.O. STD ISSUE DATE NOV. 2015	© 2015 McDonald's USA, LLC			
41-0760.00.0 <b>A1.0</b> FLOOR PLAN		REVIEWED BY R.K.	<b>McDonald's USA, LLC</b>  These drawings and specifications are the confidential and proprietary property of McDonald's USA, LLC and shall not be copied or reproduced without written authorization. The contract documents were prepared under license to the undersigned architect and shall not be used for any other project without the express written consent of the undersigned architect. Reproduction of these drawings, specifications, or contract documents for reuse on another project is not authorized.	<b>Taylor &amp; Kempkes</b>  ARCHITECTS, P.A. 1100 N. WILDERVILLE AVENUE, SUITE 200 WILDERVILLE, TN 37187 FAX 901-923-3166 PHONE 901-424-5679		
	SITE ID	SITE ADDRESS	DATE ISSUED 06-28-2017			
041-0760	21320 HWY 22 Parkers Crossroads WILDERVILLE, TN					